

P. 70



P. 70  
B W V - 4374  
Nr 233a

I  
870

681. Aut. J. S. Bach  
a. Chor von Joh. Sebastian Bach: Christe du Lamm Gottes. Gm.  
b. Kyrie von Joh. Sebastian Bach. Fd. 8. 10. 11. 12. 13.

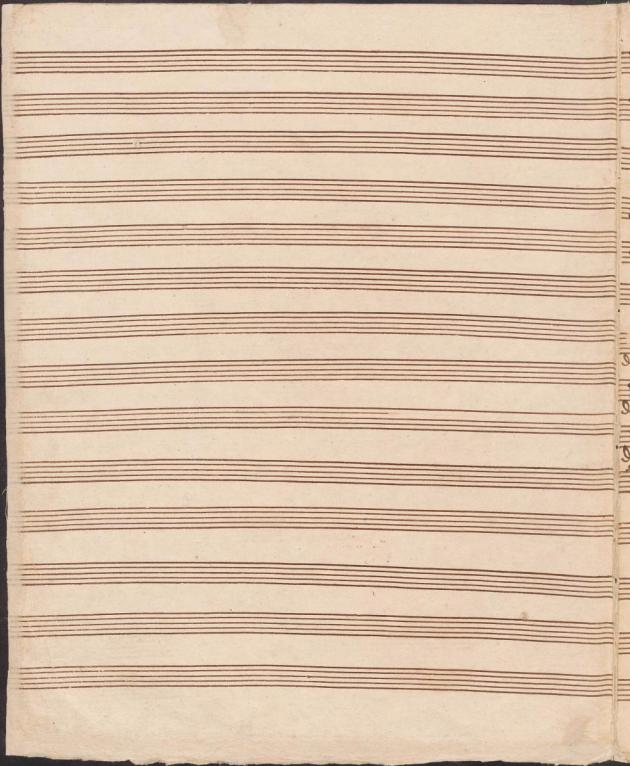
Efter, Von J. S. Bach.

mit der Cantate: „In meines Göttes Namen.“

(Der Nimm in der Kirche: Lobt Gott zu Lauten.

Von Emanuel Bachs eigener Hand.

Pöhlman.



Choral. Largo

Oboe 1

Oboe 2

Violino 1

Violino 2

Viola

Canto

Alto

Tenore

Basso

Continuo



Handwritten musical notation for the first system, consisting of five staves. The notation includes various rhythmic values, accidentals, and dynamic markings such as 't' (trillo).

Handwritten musical notation for the second system, including vocal lines with lyrics and a basso continuo line with figured bass.

Lyrics: *got - tab*

Lyrics: *gott es sei ein gott*

Lyrics: *got - tab*

Lyrics: *gott es sei ein got - tab*

Lyrics: *Der Herr trägt die Säule der Welt*

Figured Bass: *4 4 3# 3# 3 3# 5 6 5 6 4 3 4 3*

Empty musical staves at the bottom of the page.



er-beam die in - fer

er - beam die in - fer er-beam - die in - fer

er-beam die in - fer er-beam die in - fer

er-beam die in - fer er-beam die in - fer

The page contains a handwritten musical score with ten staves. The first six staves are instrumental, likely for a keyboard or lute, featuring complex rhythmic patterns and ornaments. The last four staves are vocal lines, each with German lyrics written below the notes. The lyrics are:

1. *Esaihe der Ean god - tel*  
 2. *Esaihe der Ean god der Ean god der Ean*  
 3. *Esaihe der Ean god - tel der Ean god*  
 4. *Esaihe der Ean god - tel Esaihe der Ean*

The notation includes various rhythmic values, accidentals, and dynamic markings. The bottom of the page shows several empty staves.











Handwritten musical notation on a single staff, featuring various note values and rests.

Empty musical staff.

Handwritten musical notation on a single staff, featuring various note values and rests.

Handwritten musical notation on a single staff, featuring various note values and rests.

Handwritten musical notation on a single staff, featuring various note values and rests.

Handwritten musical notation on a single staff, featuring various note values and rests.

Handwritten musical notation on a single staff, featuring various note values and rests.

Handwritten musical notation on a single staff, featuring various note values and rests.

Handwritten musical notation on a single staff, featuring various note values and rests.

Handwritten musical notation on a single staff, featuring various note values and rests.

Handwritten musical notation on a single staff, featuring various note values and rests.

Handwritten musical notation on a single staff, featuring various note values and rests.

Handwritten musical notation on a single staff, featuring various note values and rests.

Handwritten musical notation on a single staff, featuring various note values and rests.

Handwritten musical notation on a single staff, featuring various note values and rests.

Handwritten musical notation on a single staff, featuring various note values and rests.

*Fine*



