



Handwritten musical notation on a five-line staff. The notation is in treble clef with a key signature of one sharp (F#). It features a complex melodic line with many beamed notes and slurs, suggesting a fast or intricate piece of music.

A blank five-line musical staff with a treble clef and a key signature of one sharp (F#).

Handwritten musical notation on a five-line staff. The notation is in treble clef with a key signature of one sharp (F#). It features a melodic line with some slurs.

Handwritten musical notation on a five-line staff. The notation is in treble clef with a key signature of one sharp (F#). It features a complex melodic line with many beamed notes and slurs.

Handwritten musical notation on a five-line staff. The notation is in treble clef with a key signature of one sharp (F#). It features a melodic line with the word "Admis." written in the middle.

Handwritten musical notation on a five-line staff. The notation is in bass clef with a key signature of one sharp (F#). It features a melodic line with some slurs.

A blank five-line musical staff with a bass clef and a key signature of one sharp (F#).

Handwritten musical notation on a five-line staff. The notation is in bass clef with a key signature of one sharp (F#). It features a melodic line with some slurs.

sia.

sia.

Priva del suo compagno - co - - Lom ba afflitta e'

sola

piange sospira e' geme - geme ma' si con -

The image shows a page of handwritten musical notation on aged paper. The page is numbered '10.' in the top left and '37' in the top right. The music is written in a system of staves. The top two staves are vocal lines, both starting with the word 'sia.' written above them. The third staff is a piano accompaniment. The fourth staff contains the lyrics 'Priva del suo compagno - co - - Lom ba afflitta e'' written in a cursive hand. Below this, there are two more systems of staves. The first system of this lower section has a vocal line starting with 'sola' and a piano accompaniment. The second system of this lower section has a vocal line with lyrics 'piange sospira e' geme - geme ma' si con -' and a piano accompaniment. The notation includes various note values, rests, and dynamic markings.

*sola* al- = me no con = la speme con la speme ch' ai

*Vms.*

*Lei ritornerà*

*for.*

*U vris.*

*al-meno con la speme ch'a lei ritorne-rai*

*Priva del suo Com-*

sia.

Musical staff with treble clef, key signature of one sharp (F#), and a series of chords and notes.

Musical staff with alto clef and key signature of one sharp (F#).

Musical staff with bass clef and key signature of one sharp (F#).

pa - gno co - L'omba afflitta e sola afflitta e' sola,

Musical staff with treble clef, key signature of one sharp (F#), and a series of chords and notes.

Musical staff with alto clef and key signature of one sharp (F#).

Musical staff with bass clef and key signature of one sharp (F#).

piange sospira e geme geme ma si con so - la si con so la al -

Handwritten musical notation for the first system, featuring a treble clef staff with a complex melodic line and a bass clef staff with chords marked with '9'.

A blank treble clef staff with a key signature of one sharp (F#).

*meno con la speme ch'a Lei ritornerà ritor - ne -*

Handwritten musical notation for the second system, including a vocal line with lyrics, a bass clef staff with chords, and a treble clef staff with chords.

Handwritten musical notation for the third system, featuring a treble clef staff with chords marked with '9'.

*Nis*

Handwritten musical notation for the fourth system, featuring a treble clef staff with a single note and a bass clef staff with a single note.

A blank treble clef staff with a key signature of one sharp (F#).

*ra'*

Handwritten musical notation for the fifth system, including a vocal line with lyrics, a bass clef staff with chords, and a treble clef staff with chords.

Handwritten musical score for the first system. It consists of five staves. The top two staves are vocal lines in treble clef with a key signature of one sharp (F#). The third staff is a piano accompaniment line in bass clef. The fourth and fifth staves are piano accompaniment lines in alto and bass clefs, respectively. The lyrics "ritto = nera ri-" are written below the fourth staff.

Handwritten musical score for the second system. It consists of five staves. The top two staves are vocal lines in treble clef. The third staff is a piano accompaniment line in bass clef. The fourth and fifth staves are piano accompaniment lines in alto and bass clefs, respectively. The lyrics "for = ne = ra = ri = for = ne =" are written below the fourth staff.



*For.*

*For.*

*mis.*

*mis*

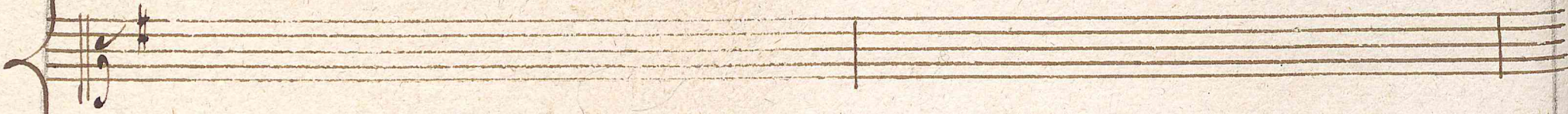
*ra*

A handwritten musical score on ten staves. The notation includes treble and bass clefs, a key signature of one sharp (F#), and various rhythmic values such as eighth, sixteenth, and quarter notes. The score is divided into two systems of five staves each. The first system contains lyrics: *For.* (twice), *mis.*, *mis*, and *ra*. The second system contains no lyrics. The handwriting is in dark ink on aged, slightly yellowed paper.

*sia.*



*sia.*



*Misera anch'io mi regno priva del mio consor-te*



*Ma che sperar poss, io se non ch'un di La morte riu*



*nirmialli Gol mio*

*Vogli a per sua pieta*

*voglio per sua pieta*

*Da*

*Capofin*